

rén

gōng

人工

zhì

néng

智能

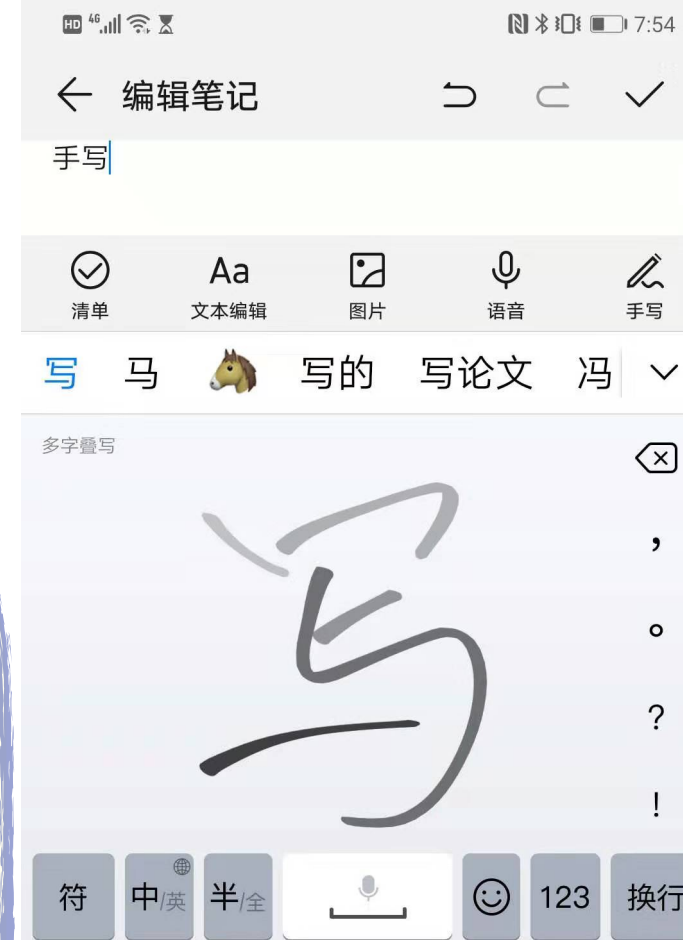
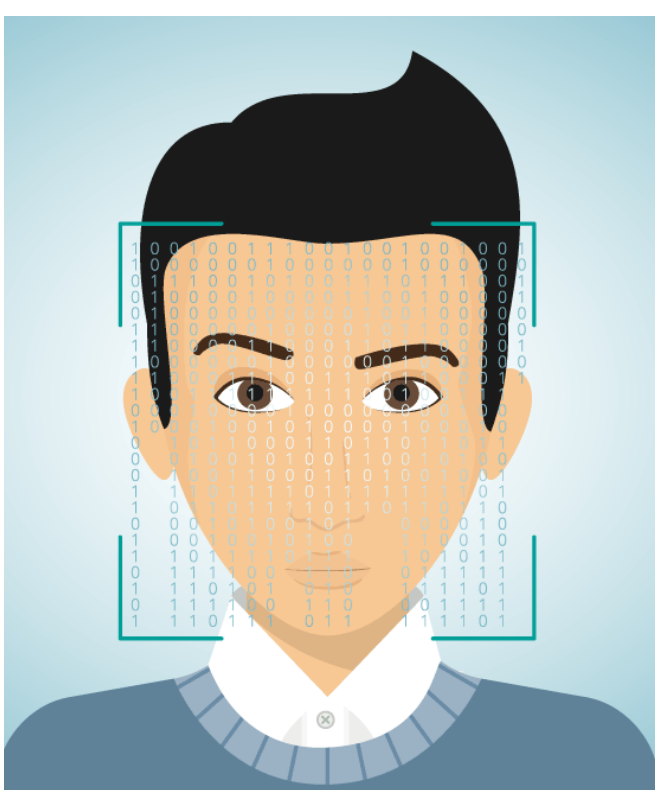
tàn

探

mì

秘





rén gōng zhì néng

人工智能

Artificial Intelligence

猜你喜欢



广西北海红树林海鸭蛋
开袋即食 单只60克...

¥59.90



风靡香港新加坡 味BA
CK港式咸蛋黄鱼皮 ...

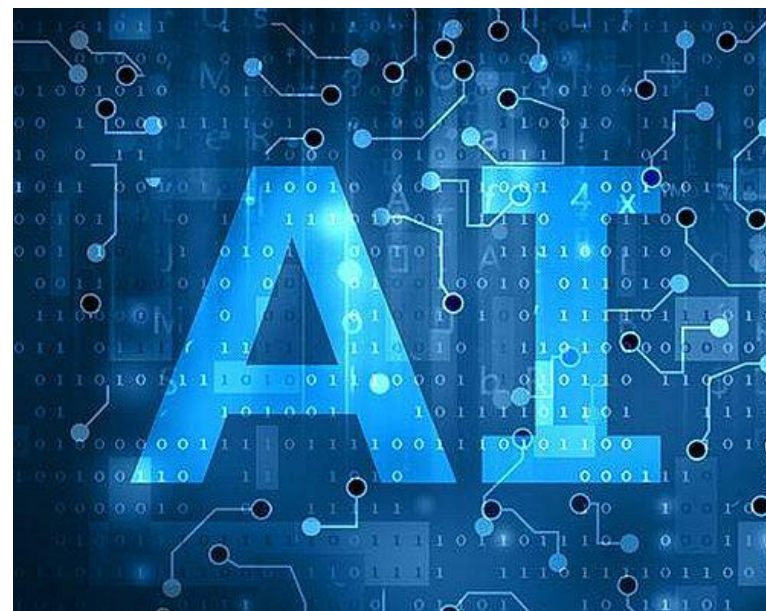
¥45.80

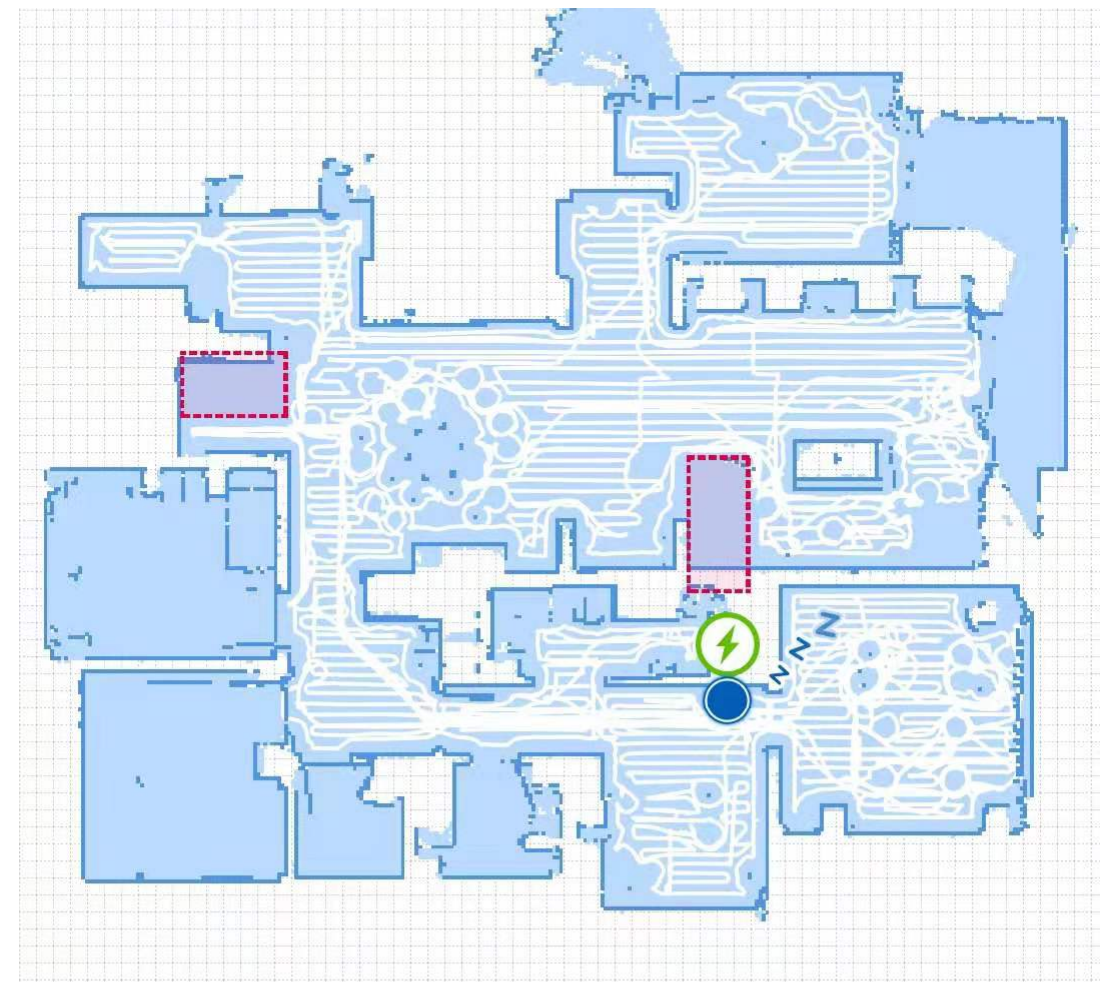


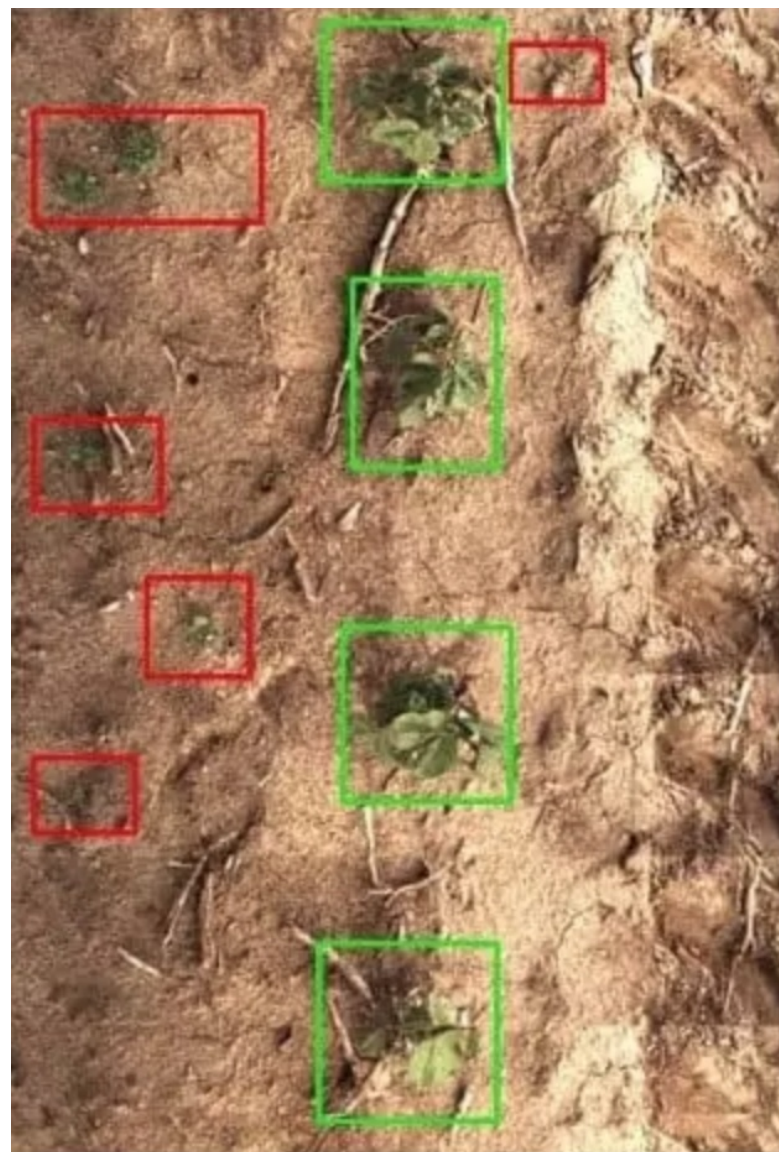
香辣鸡尖 鲜嫩爽口 地
道川味代表 唇齿留香



魔兮美五周年限定祛痘
修复套盒 温和祛痘 ...



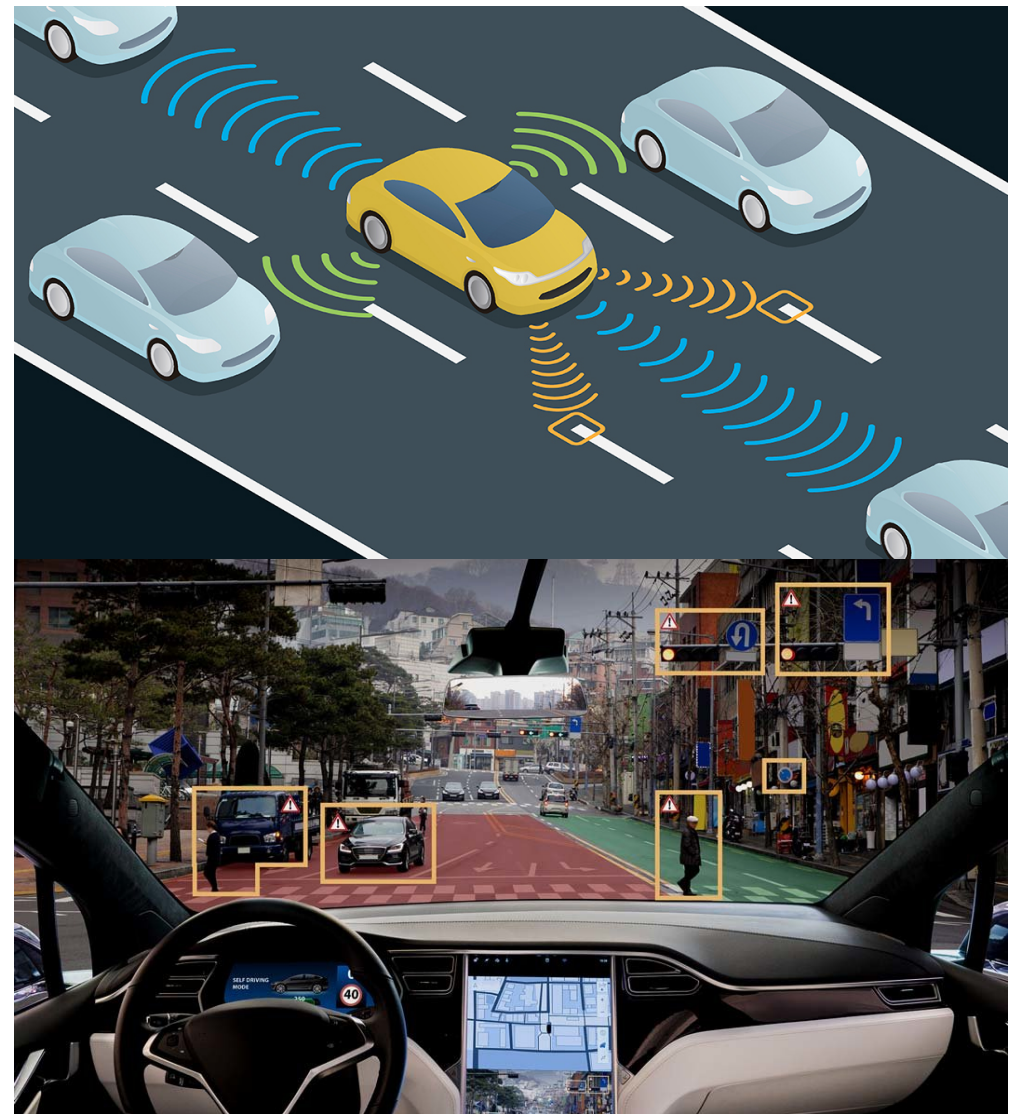




什么是人工智能？



什么是人工智能？

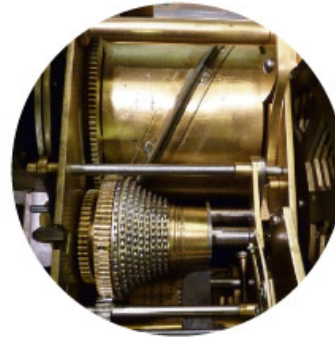


什么是人工智能？



什么是人工智能？

人工
+
智能



1. The writing hand is powered by two clockwork motors. One turns a set of brass disks — or cams — arranged in banks of three dedicated sets. The other (shown above) moves the cam assembly left and right.



2. Each of the writing hand's 72 cams has a pattern cut into its edge corresponding to specific arm movements. As the cams rotate, metal styluses read the data.



3. The styluses in turn drive a series of rods, providing motion. There is a separate stylus for each direction: forward and back, side to side and up and down.



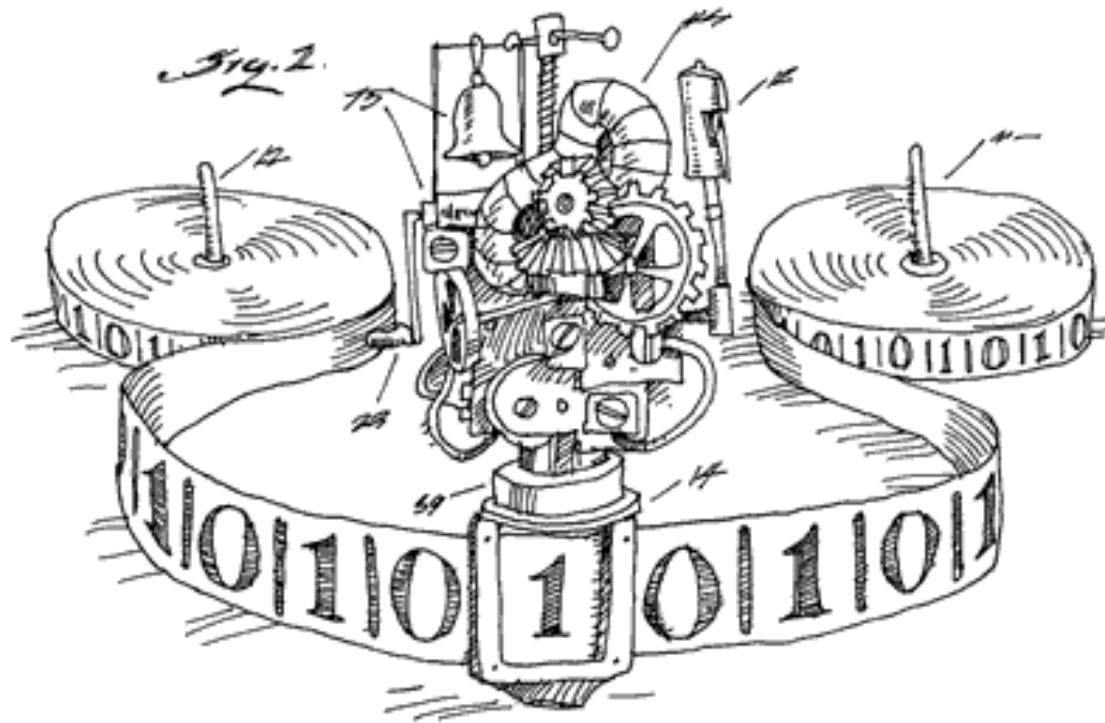
4. The head, eyes and left arm are controlled by an integrated mechanism that takes its cues from a pair of cams. The cams are operated by the same rotational motor as the drawing cams.



Maillardet's automaton

1800

tú líng jī
图灵机

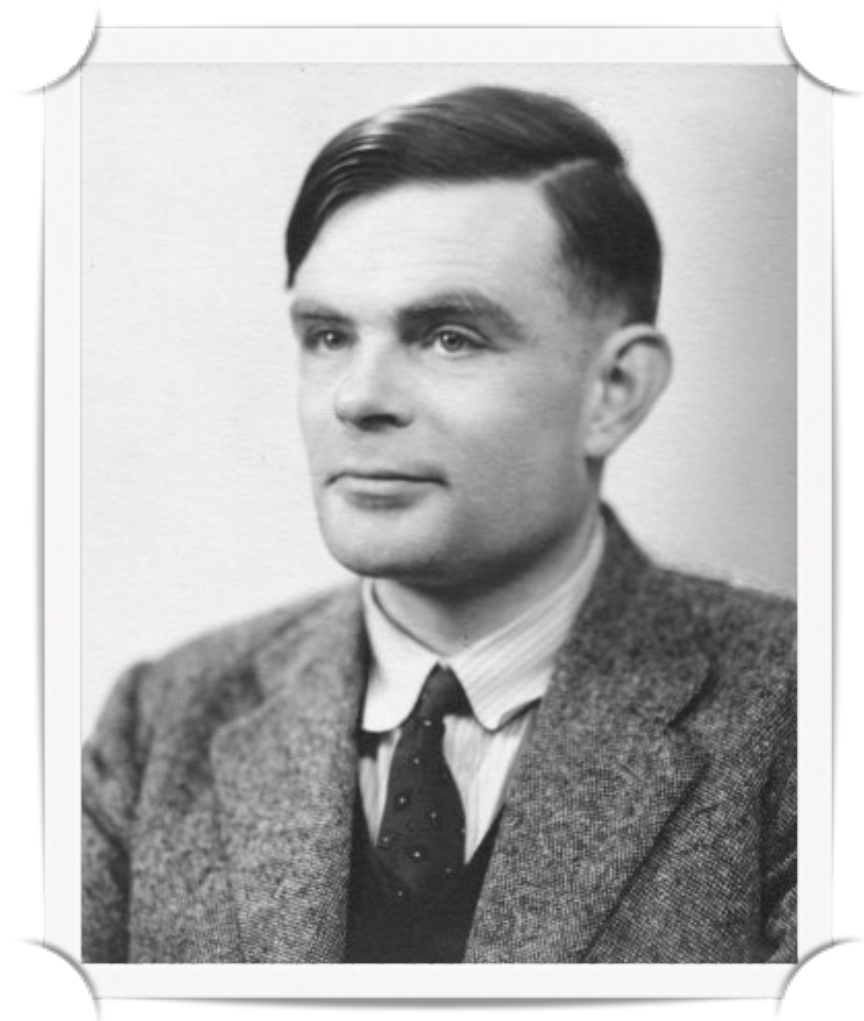


ON COMPUTABLE NUMBERS, WITH AN APPLICATION TO
THE ENTSCHEIDUNGSPROBLEM

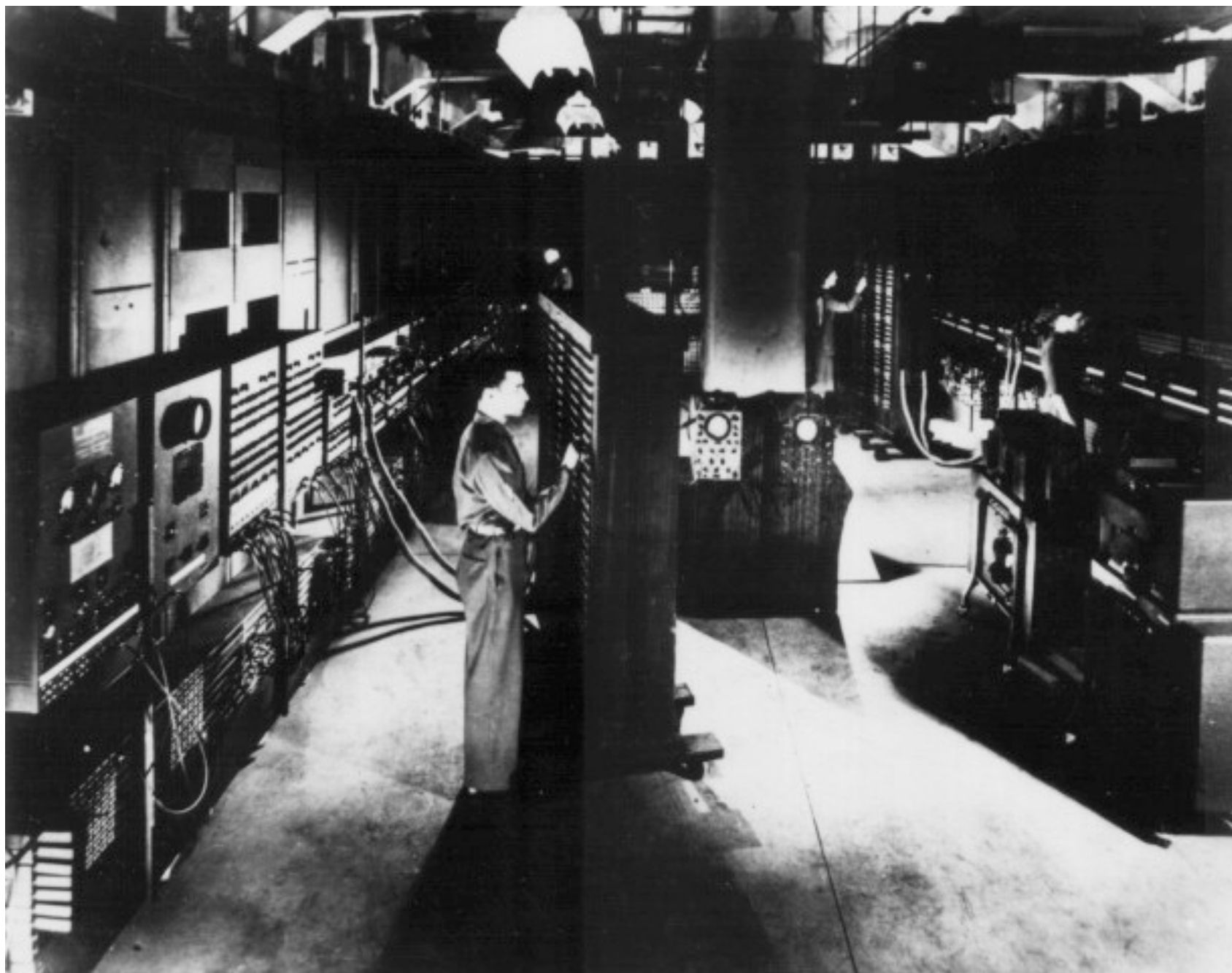
By A. M. TURING.

[Received 28 May, 1936.—Read 12 November, 1936.]

The “computable” numbers may be described briefly as the real numbers whose expressions as a decimal are calculable by finite means. Although the subject of this paper is ostensibly the computable *numbers*, it is almost equally easy to define and investigate computable functions of an integral variable or a real or computable variable, computable

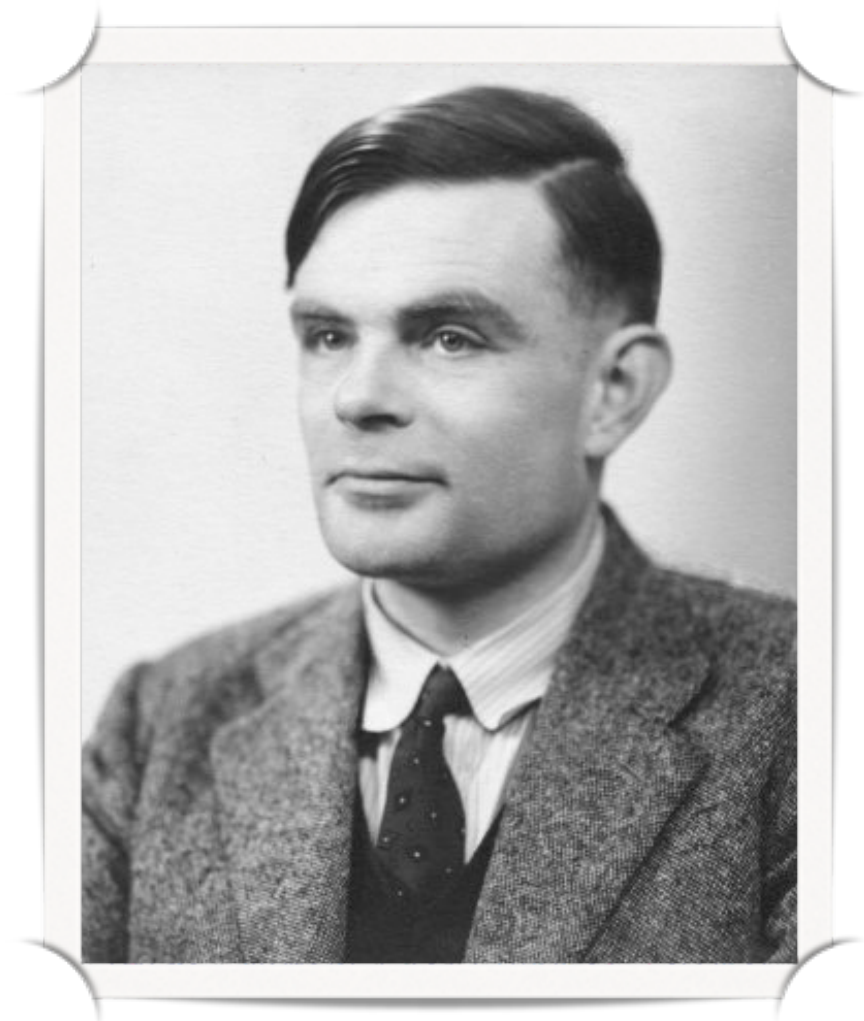
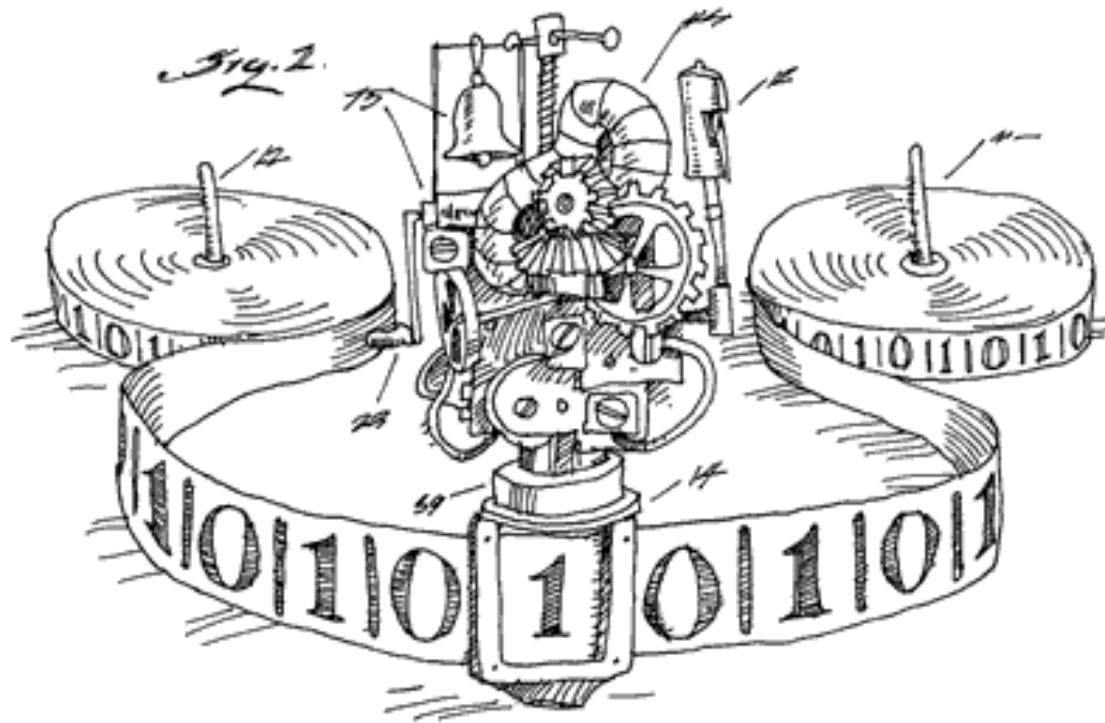


图灵
(1912—1954)



第一台通用电子计算机 ENIAC（1947年）

tú líng jī
图灵机

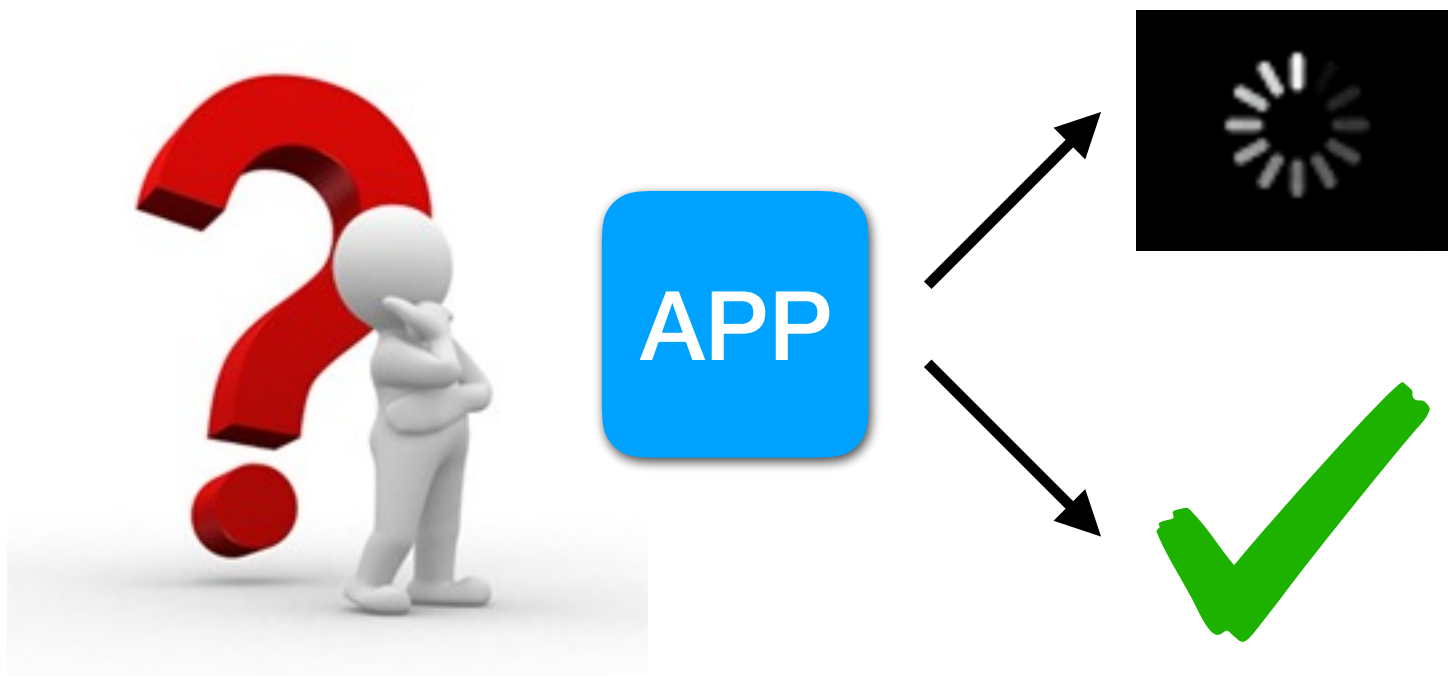


图灵
(1912—1954)

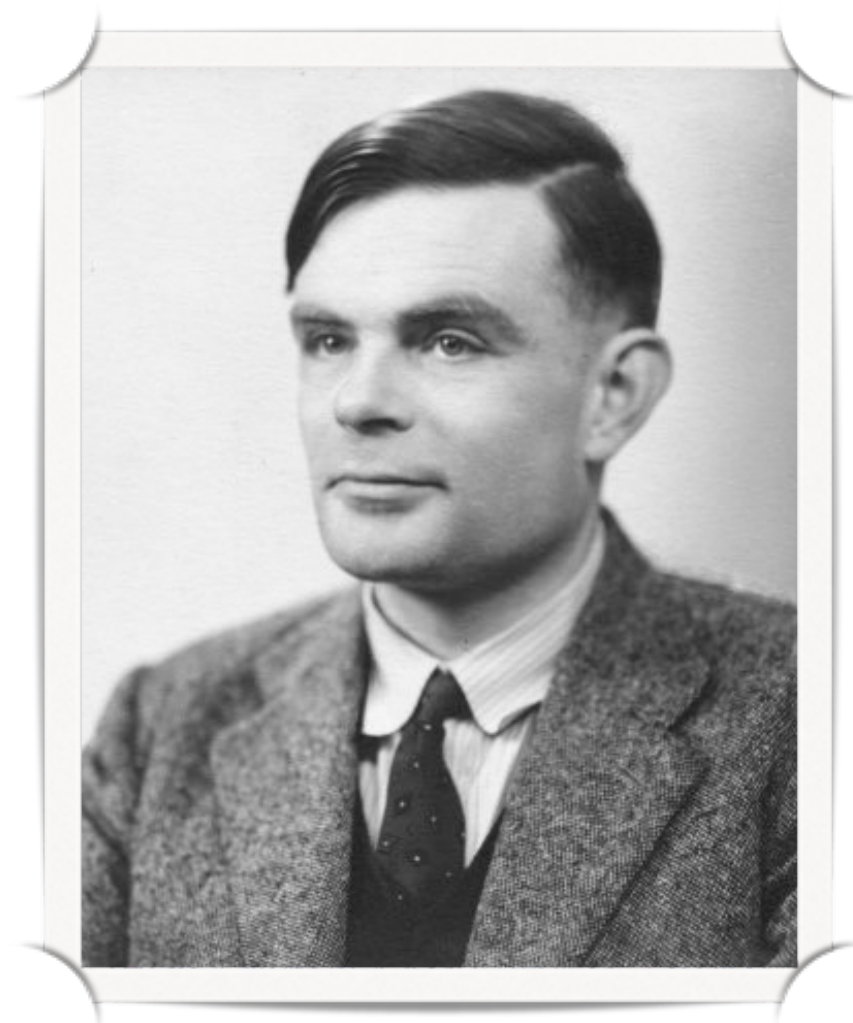


...

tíng jī wèn tí
停机问题

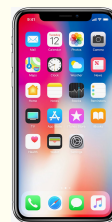
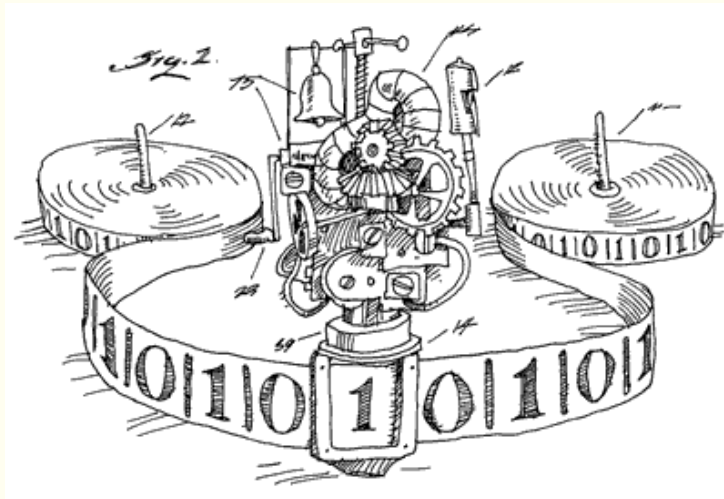


“没有任何计算机能
解决停机问题”

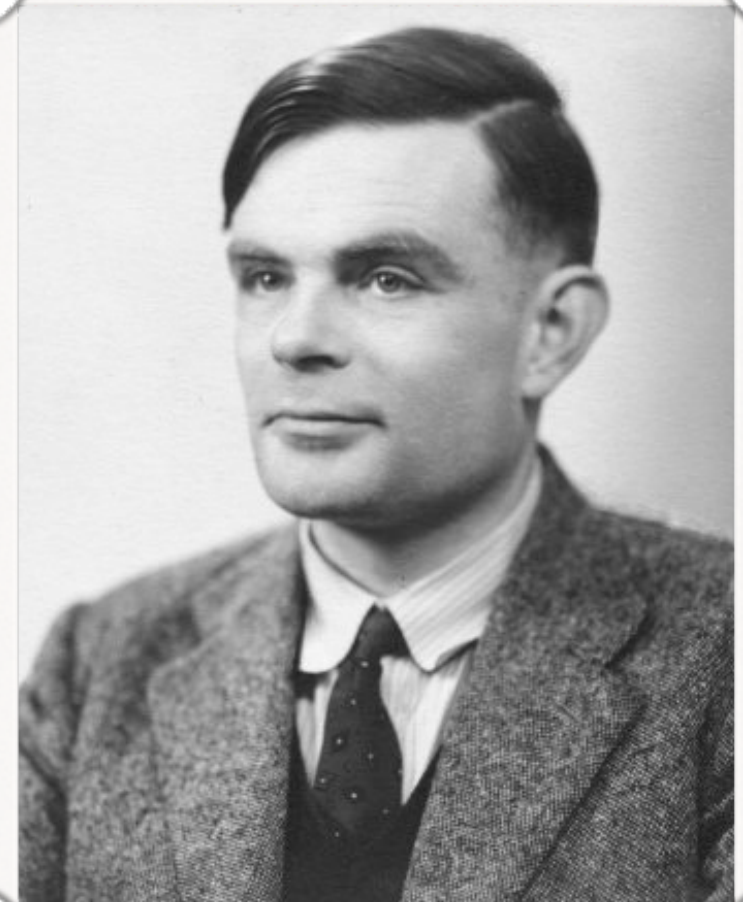


图灵
(1912—1954)

计算

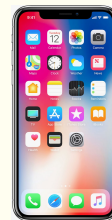
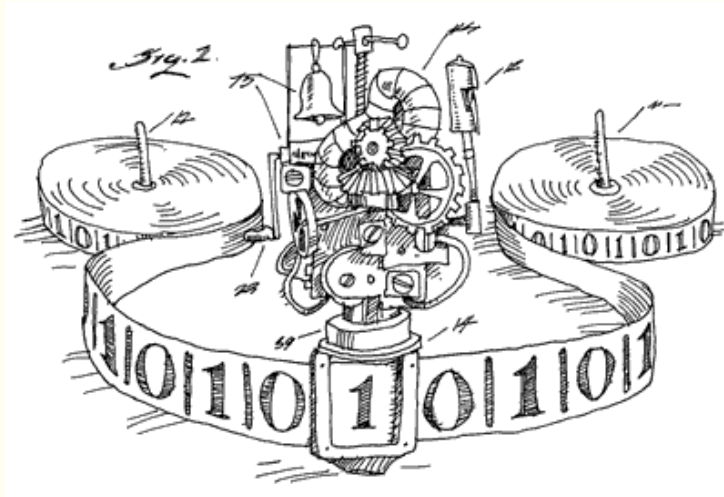


...



图灵
(1912—1954)

计算



...

?
=



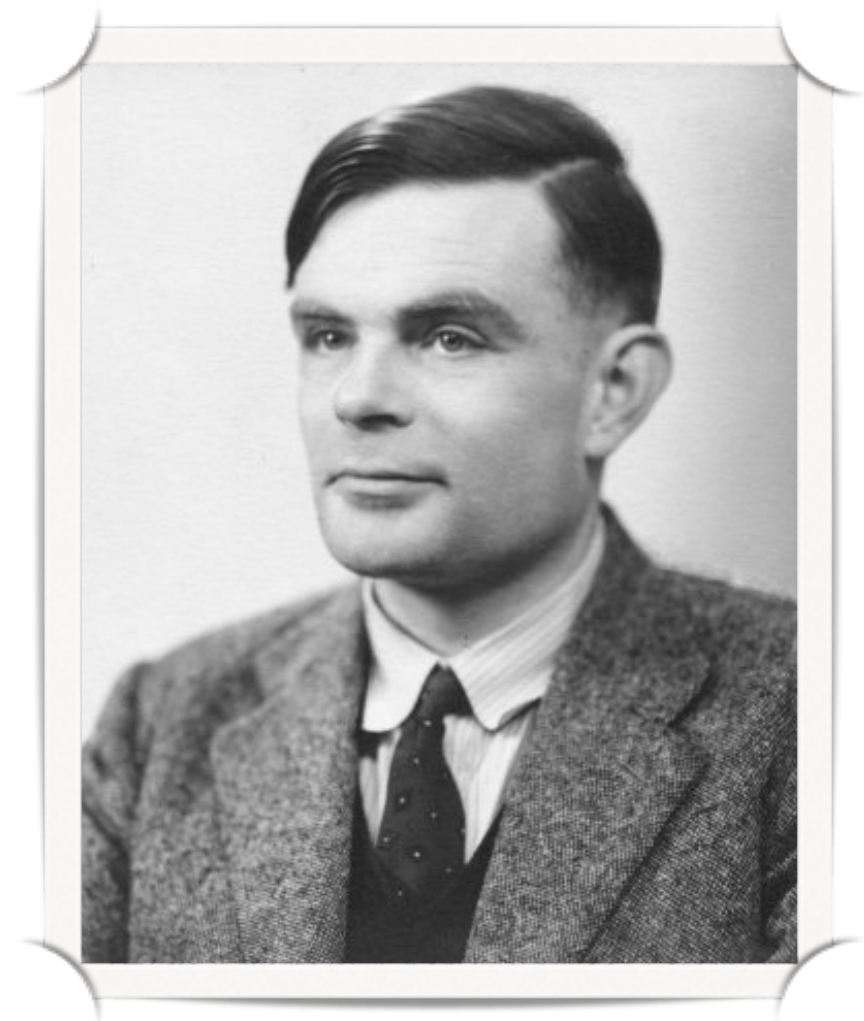
A. M. Turing (1950) Computing Machinery and Intelligence. *Mind* 49: 433-460.

COMPUTING MACHINERY AND INTELLIGENCE

By A. M. Turing

1. The Imitation Game

I propose to consider the question, "Can machines think?" This should begin with definitions of the meaning of the terms "machine" and "think." The definitions might be framed so as to reflect so far as possible the normal use of the words, but this attitude is dangerous. If the meaning of the words "machine" and "think" are to be found by examining how they are commonly used it is difficult to escape the conclusion that the meaning and the answer to the question, "Can machines think?" is to be sought in a statistical survey such as a Gallup poll. But this is absurd. Instead of attempting such a definition I shall replace the question by another, which is closely related to it and is expressed in relatively unambiguous words.



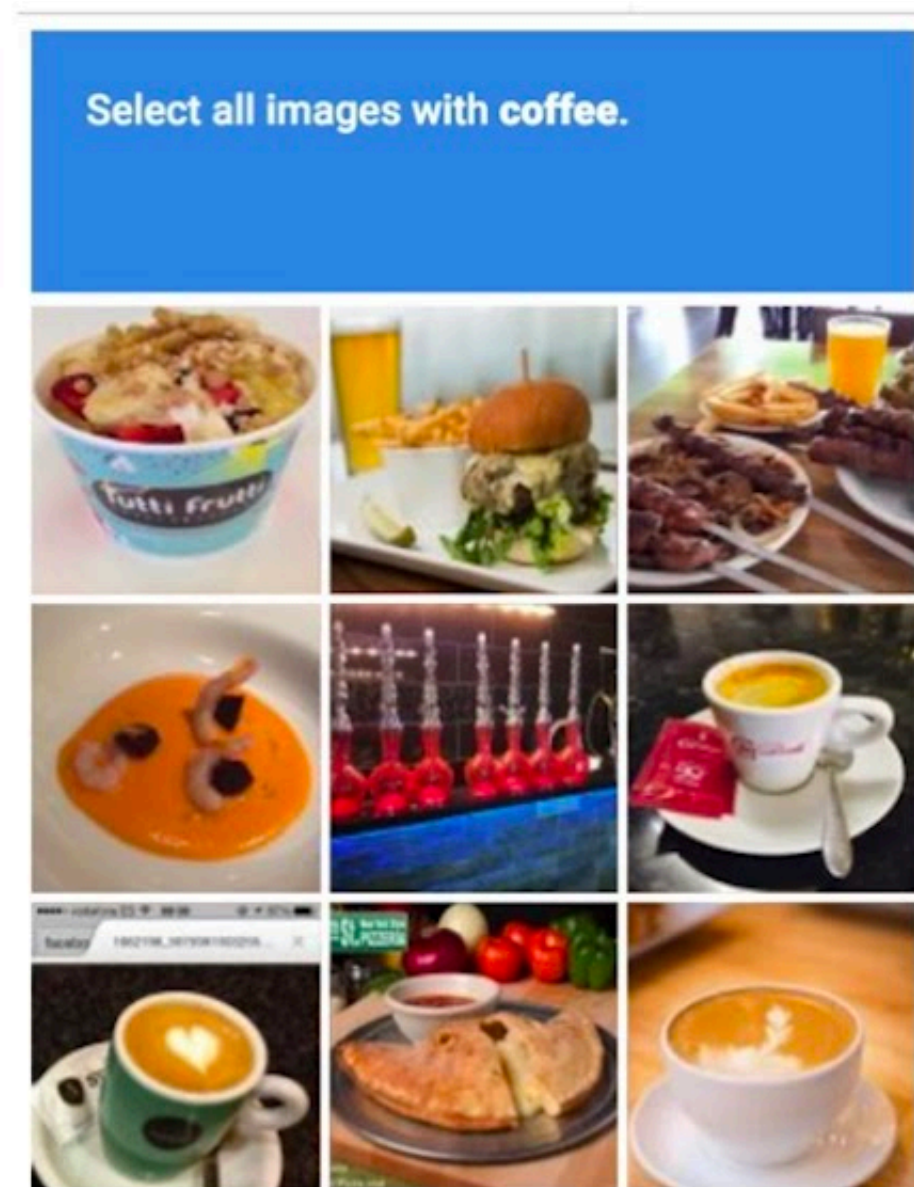
图灵
(1912—1954)

tú líng cè shì
图灵测试

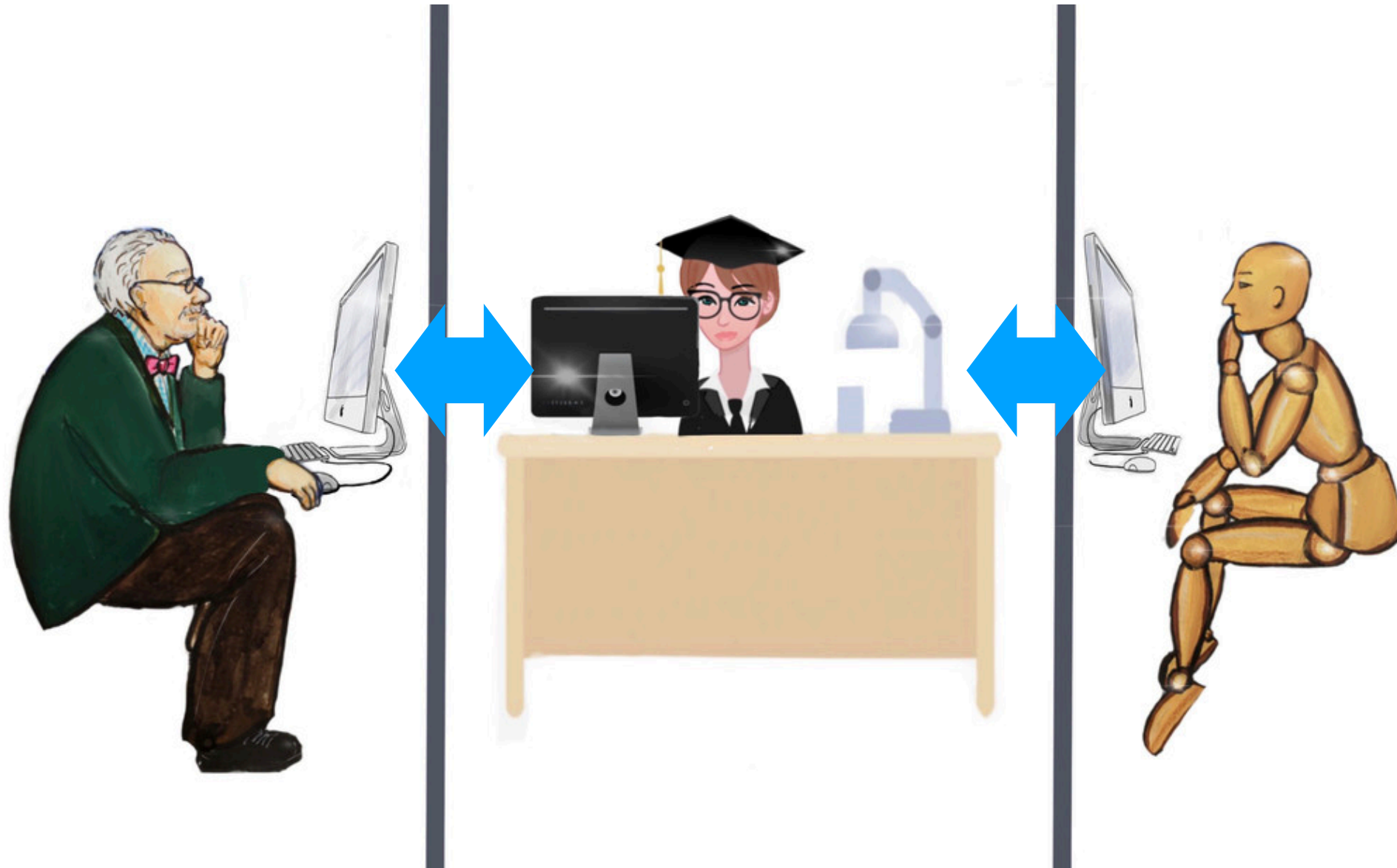


tú líng cè shì

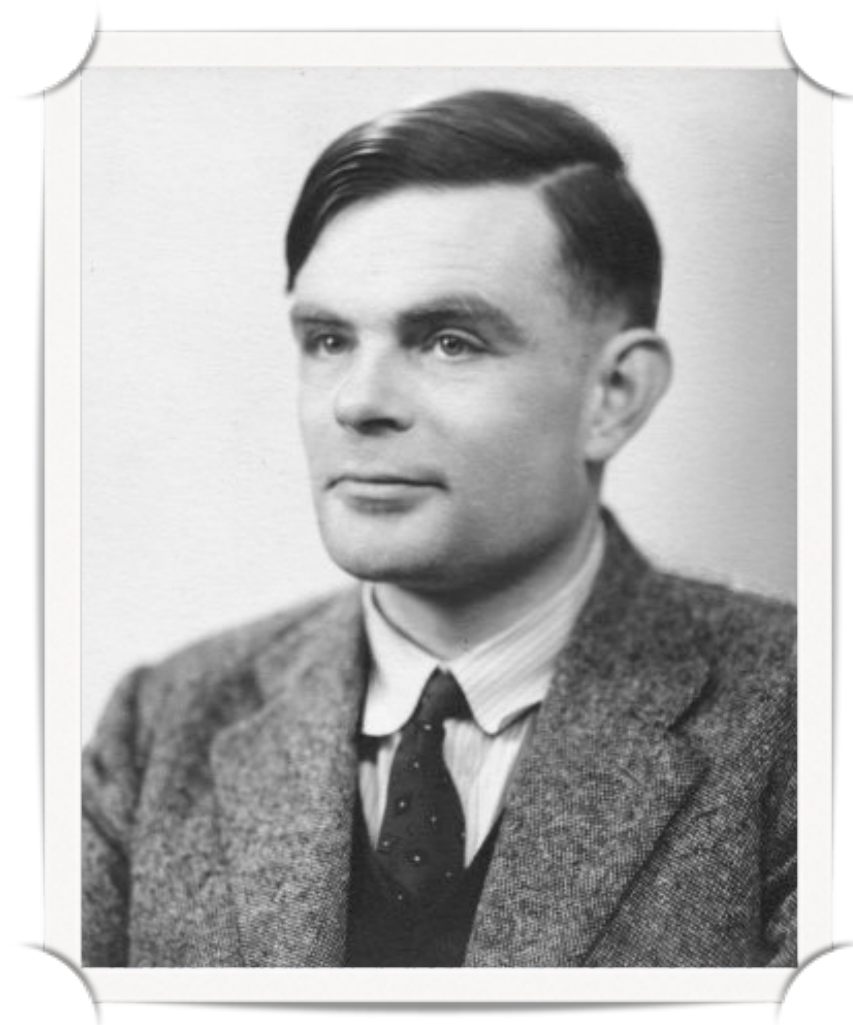
图灵测试



tú líng cè shì
图灵测试



tú líng jiǎng
图灵奖



图灵
(1912—1954)

Artificial Intelligence

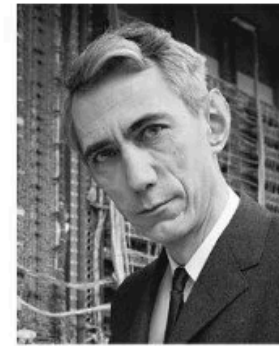
1956 Dartmouth Conference: The Founding Fathers of AI



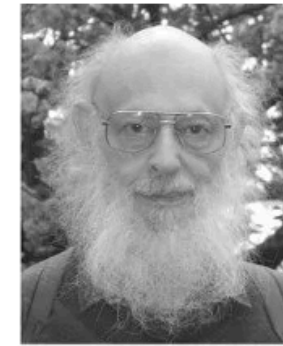
John MacCarthy



Marvin Minsky



Claude Shannon



Ray Solomonoff



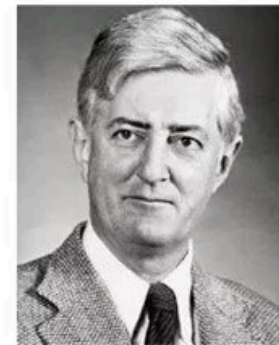
Alan Newell



Herbert Simon



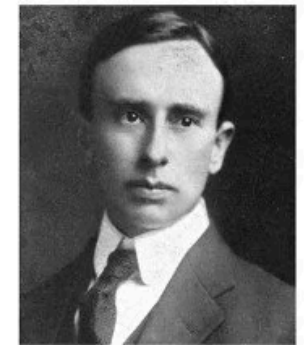
Arthur Samuel



Oliver Selfridge



Nathaniel Rochester



Trenchard More



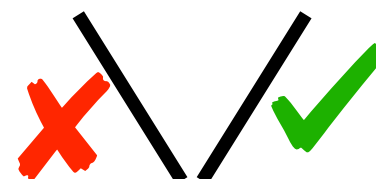
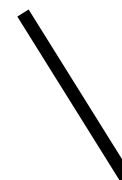
The Akinator character is a stylized man with a white turban featuring a red flame on top. He has a blue mustache and is wearing a blue tunic with orange trim on the sleeves and a gold chain. He is in a dynamic pose, with one leg raised and hands gesturing. The background is a light blue gradient with faint, larger versions of the character.

我是Akinator

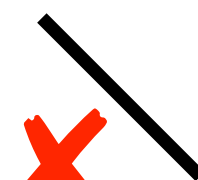
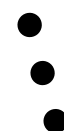
猜想一个真实或虚构的人物。
我会尝试猜他是谁

akinator®

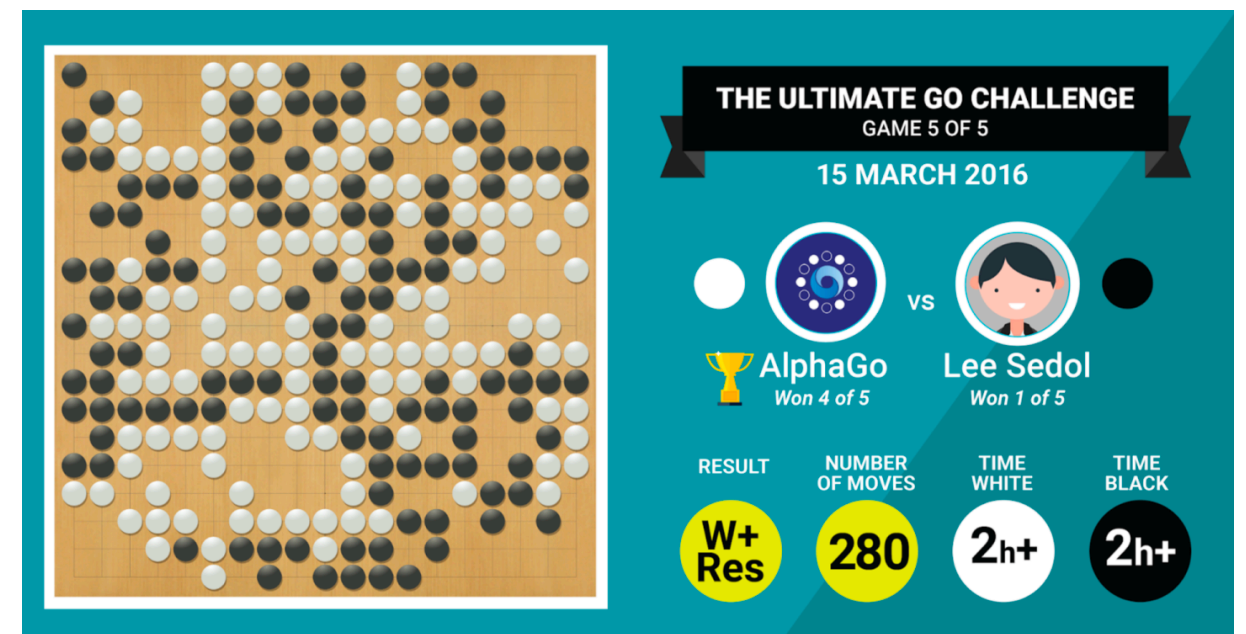
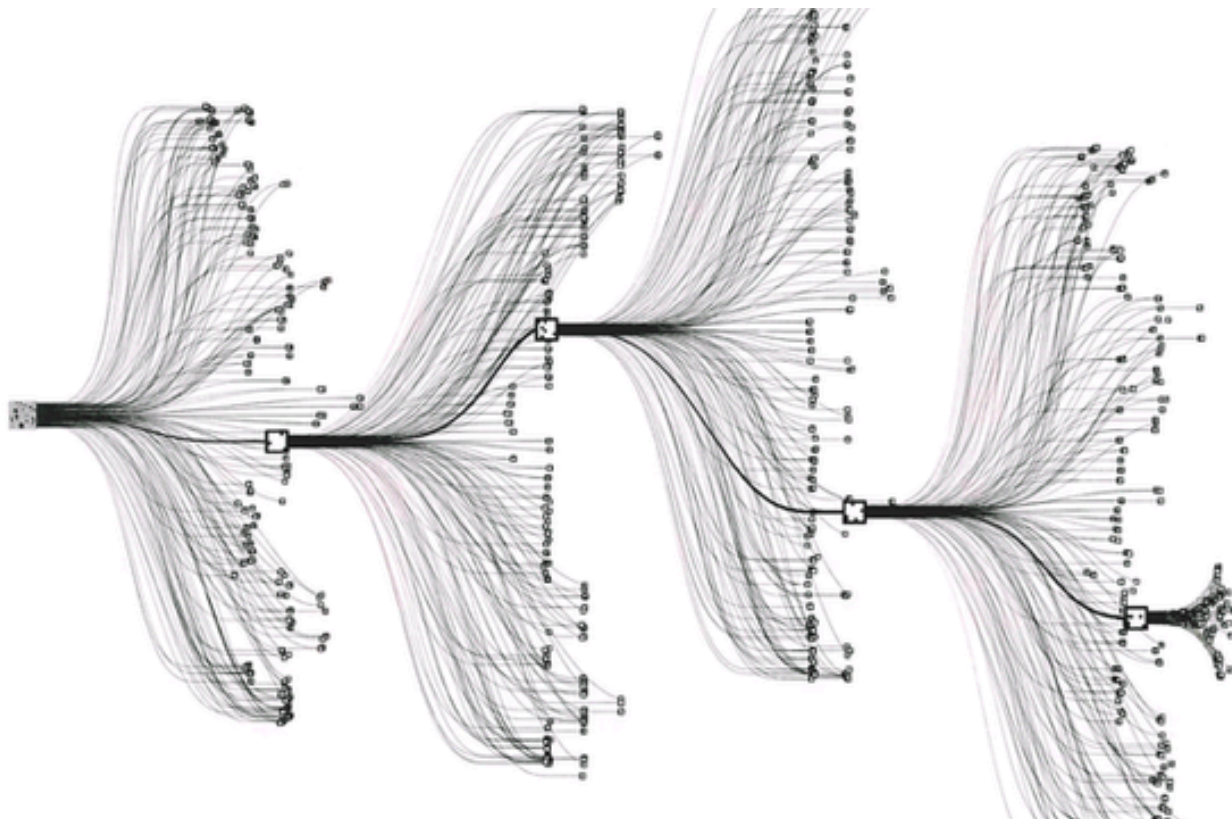
<https://cn.akinator.com>



是男生吗?



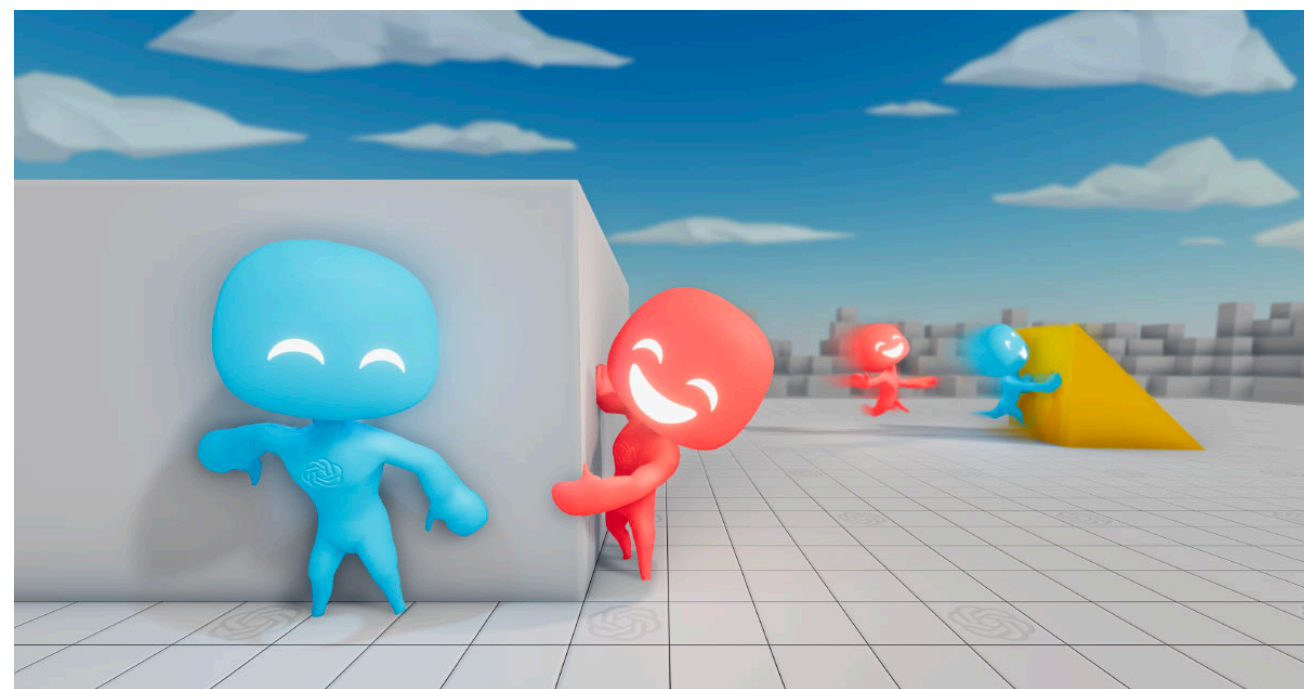
是动漫人物吗?



AI的捉迷藏游戏



增加了可观赏性



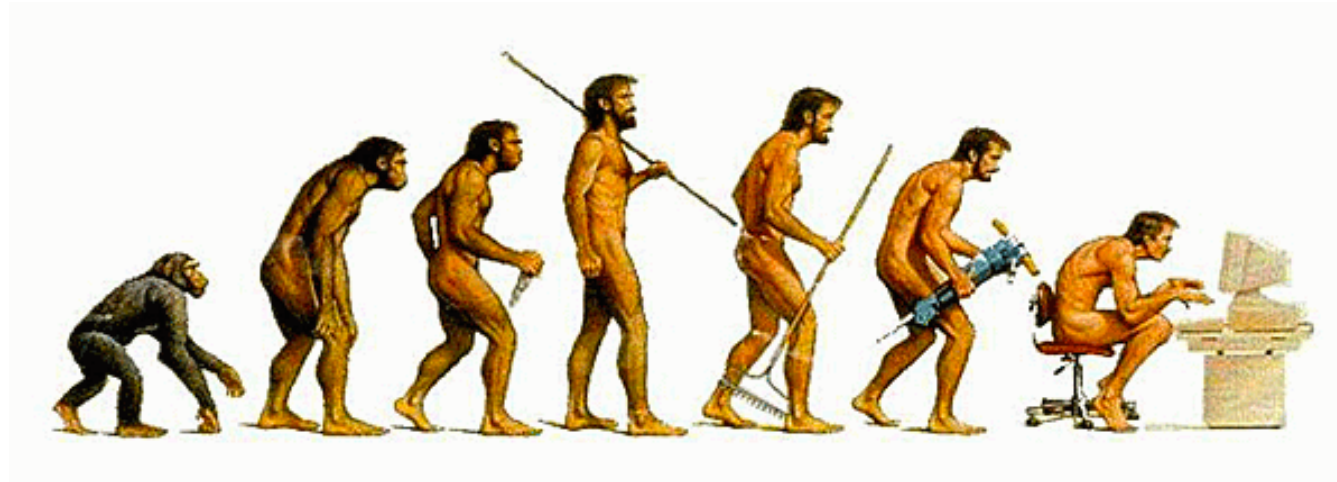
Multi-Agent Hide and Seek

人工“智障”

Artificial Stupidity



人工智能技术的局限



- 人类尚未弄清“计算”和“智能”的本质
- 不断强化偏见 —— 兼听则明，偏信则暗
- 错把“相关”当做“因果” —— 追根穷底，探索真相

